

# MONTHLY MEMBERSHIP PROGRESS REPORT

LOCATION KENTUCKY

District 43 Y

Results as of: 5/31/2023

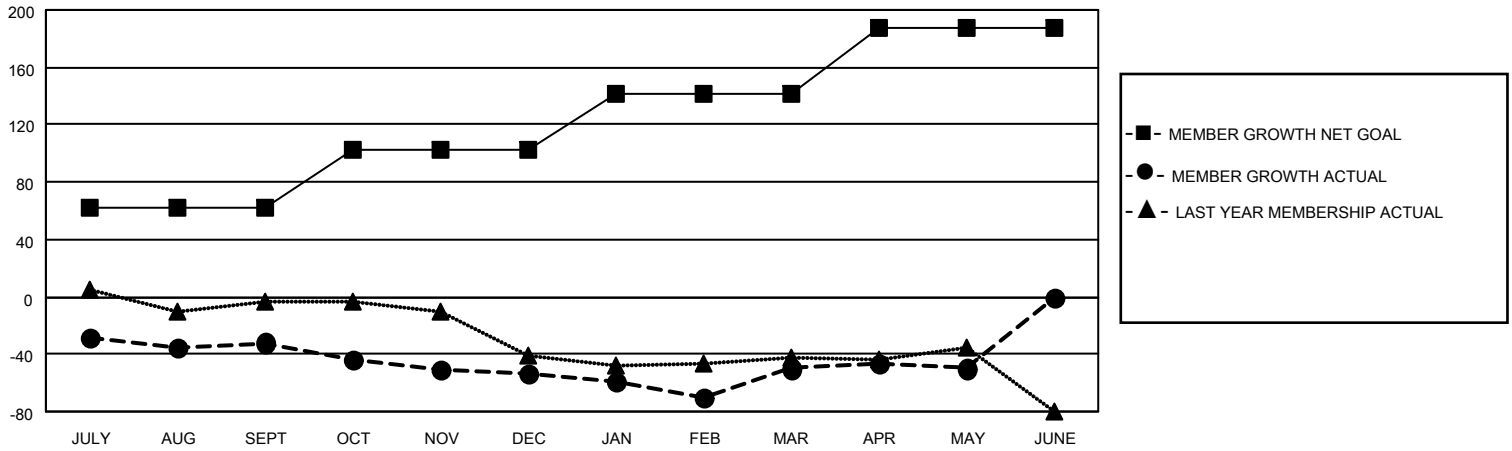
Clubs			
RESULTS FOR 2022-2023			
QUARTER	NEW CLUB GOAL	NEW CLUBS	DROPPED CLUBS
JULY/AUG/SEPT	0	0	3
OCT/NOV/DEC	0	0	1
JAN/FEB/MAR	1	0	0
APR/MAY/JUNE	1	0	0

Members			
RESULTS FOR 2022-2023			
QUARTER	MEMBER GROWTH NET GOAL	MEMBER GROWTH ACTUAL	DROPPED MEMBERS ACTUAL (including transfers)
JULY/AUG/SEPT	62	40	60
OCT/NOV/DEC	40	25	42
JAN/FEB/MAR	40	53	45
APR/MAY/JUNE	45	26	25

**GOALS AND ACTUAL NEW CLUBS CUMULATIVE**



**GOALS AND ACTUAL MEMBERS CUMULATIVE**



**DROPPED CLUBS: 4**

**40 CLUBS OF 80 ADDED 1 OR MORE NEW MEMBERS**

**GENDER DISTRIBUTION**

MALE	1,103 (64.69%)
FEMALE	601 (35.25%)
NON BINARY	0 (0.00%)
PREFER NOT TO ANSWER	1 (0.06%)

**DROPPED MEMBERS**

[CLICK HERE FOR CUMULATIVE MEMBERSHIP DATA](#)

DECEASED	30
CLUB CANCELLED	6
OTHER	136
<b>TOTAL</b>	<b>172</b>

TOTAL FAMILY UNIT MEMBERS 379

FAMILY MEMBERS PAYING HALF DUES 195